

NASSAU REFUGEES HERE

SS. Munamar Lands 60 Passengers From Storm-Swept Island; Captain and Crew Are Praised For Able Handling of Vessel During Hurricane.

FIRST refugees from hurricane-swept Nassau reached Miami yesterday on the Munson steamship Munamar. Sixty passengers were landed, most from Nassau, but a few from New York. The majority from Nassau came to the mainland on business concerned with restoration of property damaged during the storm. Several women had been sent to Miami to escape the conditions left by the hurricane until the first cleanup of the city and its wreckage can be completed.

Passengers from New York were taken in pieces of the handling of the ship by Capt. C. M. McDonald, a retired hero of the hurricane. Captain McDonald brought the liner through a corner of the storm, after trying to get entirely out of its path, and stayed on the bridge continuously for 32 hours at one time while his vessel was in the disturbance. During a portion of that time seas were breaking entirely over the Munamar.

Three windows on the promenade deck were broken during that interval, but despite the high seas and lashing wind, no other damage was incurred.

A BOAT carried as cargo in the forward well deck was loosened from its lashings, but was saved by members of the crew, working under tons of water which cascaded over the bow.

The Munamar was forced to heave-to twice during her course from New York to Nassau, which she reached Tuesday afternoon. She sailed from Nassau Thursday night.

Chief Officer A. W. Gavin and other members of the Munamar's staff shared in credit for work that was at all times exacting and that several times brought forth qualities of heroism in bringing the Munamar safely through the storm.

At Nassau the ship was welcomed as the only helping agency available in the city's hour of distress. With her wireless station crippled, Nassau was unable to tell the outside world of her plight until the Munamar arrived. Then the Munamar's radio set was called into service to dispatch official communications asking for aid, and to send private messages telling of the storm's toll.

THE Munamar left New York last Friday. She began getting a strong ground swell, advance notice of the hurricane's approach, at 8 p. m. Sunday. At midnight Sunday the

CONTINUED ON PAGE 4

Abel Martin... CLOTHES RINGS & MARK PLOWS

I remember when the ole time spread eagle orator used the 4th of July for a stepping stone to his office in the county. Does crime pay? Last week an ole Western Wells-Fargo outlaw, who has been reduced to lecturing, passed through an address out Rotary club for \$1.

THE WEATHER July 30, 1926. Barometer, sea level... 30.03 30.05 30.03

Weather Conditions July 30, 1926. The heat wave that was central over Florida Thursday morning moved northward to the north Atlantic coast with rapidly diminishing intensity.

OLD HOME TOWN WEATHER. July 30, 1926. Lowest Temp. - Highest Temp. - Rainfall -

Atlantic City, N. J. 70 84 0.00 Boston, Mass. 70 84 0.00

Barlow 73 88 0.00 Buda 72 88 0.00

ICE FACILITIES LARGER

Florida Power & Light Company Will Spend \$1,700,000 On Construction Project.

FURTHER keeping pace with the growth of Florida and reckoning with growth that will take place in the future, the Florida Power and Light Company is launching a program of construction of ice facilities that ultimately will cost \$1,700,000, according to announcement made yesterday.

Improvement of Plant No. 1, Sixth street and N. Miami avenue, will cost \$125,000, according to Ralph Y. Poole, general superintendent of the Florida Power and Light Company. Work on the plant is expected to be completed by October. Additions and changes will be made which will make the plant modern. All ammonia compressors, pumping equipment and auxiliary equipment will be operated by electricity.

The new standard ice plants planned by the company will have a 50-ton capacity, with 72 cubic feet of ice per ton, and will be 35 feet in width and 100 feet long. Refrigerating experts for the company have made a study of ice plants throughout the United States with the view of developing ice plants that will be economical in production and render the most convenient service to the public, according to Joe H. Gill, vice president and general manager.

Miami plant No. 2 also is being rebuilt, including the building and freezing equipment. It is electrified throughout, Mr. Poole said. This work will be finished during August and will cost \$185,000.

During the last year one of the company's standard 50-ton ice plant units was constructed at Fort Lauderdale with electrically driven ice plant apparatus throughout, but this was found to be insufficient to meet the demands of the city and surrounding communities. The company therefore purchased and is now constructing a 100-ton ice plant unit which additional capacity will provide the company with an ample supply to meet the sales demands at all times in this territory. The maximum daily ice sales during May were 8 1/2 tons and during June, 125 tons.

MELBOURNE will have a 50-ton ice plant under the company's program. It will cost \$100,000. Engineering plans and specifications have practically been completed to get this work under way at an early date for completion during the latter part of this year. A 30-ton ice plant unit was completed last month at the Cocoa ice plant, which will give that city a 10-ton plant in addition to the capacity formerly used for its requirements. The Titusville plant has been electrified and modernized throughout.

During the early part of 1925 a standard electrically driven 50-ton plant unit was installed at Daytona Beach, doubling the capacity there and a new 50-ton addition has been authorized for construction during the latter part of 1926 at an estimated cost of \$145,000.

A new plant at Hawthorne has been authorized to cost \$45,000 and will have a 20-ton capacity. A meat storage plant is included in the plans for this plant.

A new 150-ton plant was completed at a cost of \$275,000 and placed in operation at West Palm Beach recently. The plant permits the manufacture of two and one-half times as much ice as formerly.

An additional 50-ton plant will be constructed in St. Augustine at a cost of more than \$100,000 and will include two new ammonia compressors and one 25-ton ammonia compressor. With the company's present 80-ton ice plant in St. Augustine and the 50-ton unit, the city will have a daily capacity of 110 tons.

DAYTONA SHORES SUIT DISMISSED Realty Company Reorganized With Enright As President.

Reorganization of Daytona Shores, Inc., was announced yesterday after Circuit Judge H. F. Atkinson ordered dismissal of a suit filed Saturday for the dissolution of the corporation and appointment of a receiver.

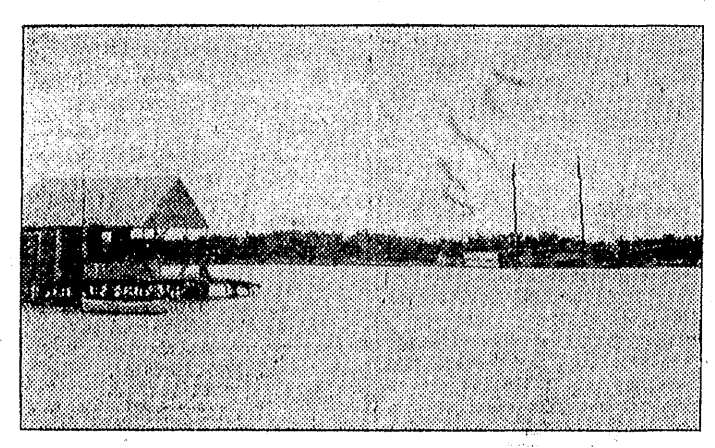
The reorganization was the outcome of a three-day conference between stockholders and creditors at Daytona Beach and the suit was dismissed by stipulation. M. H. Rosenhouse, attorney for the petitioners, said.

Richard E. Enright, former police commissioner of New York, is the new president of the corporation, and with Carl L. V. Exelsen will conduct the reorganized company. Mortgage holders have extended interest and principal payments. Mortgages total \$950,000.

The action against the company was taken by eight stockholders led by Louis J. Hamel, attorney. Enright, Exelsen and the corporation were named as defendants.



One of the few pictures taken while the storm still was in progress in Nassau is shown here. The broken tops of the royal palm trees still were breaking in the subsiding gale. Most of the trees on New Providence Island and many of the other Bahama Islands were blown down.—Photograph by J. Irmlinger.



Another view of damage in the Nassau harbor shows a schooner down against the bank, driven level foremast high onto land. The little dingy at the left rode out the storm, although the water in the foreground covers what ordinarily is dry land, and was driven to its high level by the high winds.—Photograph by J. Irmlinger.

RAILWAY LINES CROSS AROUND THE CITY

Seaboard Lays Tracks Over F. E. C. Right-of-Way In Hialeah Following Agreement.

LAYING of Seaboard All-Florida Railway tracks over the Florida East Coast Railway tracks south of Everglades avenue, Hialeah, was completed yesterday. Work on track construction northward from Thirty-sixth street has progressed to Thirty-second street.

The crossing in Hialeah was completed within two weeks after officials of the two railway companies had reached an agreement whereby the Seaboard could cross the Florida East Coast right-of-way. An injunction suit filed against the Seaboard by the Florida East Coast company was withdrawn after officials reached an agreement out of court.

The laying of tracks southward from West Palm Beach has progressed as far south as Boynton, with other local plant improvements well advanced. The officials declined to make announcement of any action being taken on contracts for 14 new stations to be built in Miami and along the line to West Palm Beach. Bids on the stations were opened two weeks ago.

SEABOARD AIR LINE AGENTS TO HEAR ABOUT LIONS' PLANS Passenger agents of the Seaboard Air Line railway throughout the North will be notified of Miami's success in obtaining the 1927 convention of Lions Club International by T. W. Luckett, district passenger agent for the railway in Miami. Mr. Luckett has mimeographed bulletins of the stories printed in The Miami Herald on the convention last Sunday, to be sent to all agents.

W. J. Brown, 2143 N. W. Forty-third street, left Wednesday for an extended visit with relatives in Columbus, Ohio. He will return early in the fall.

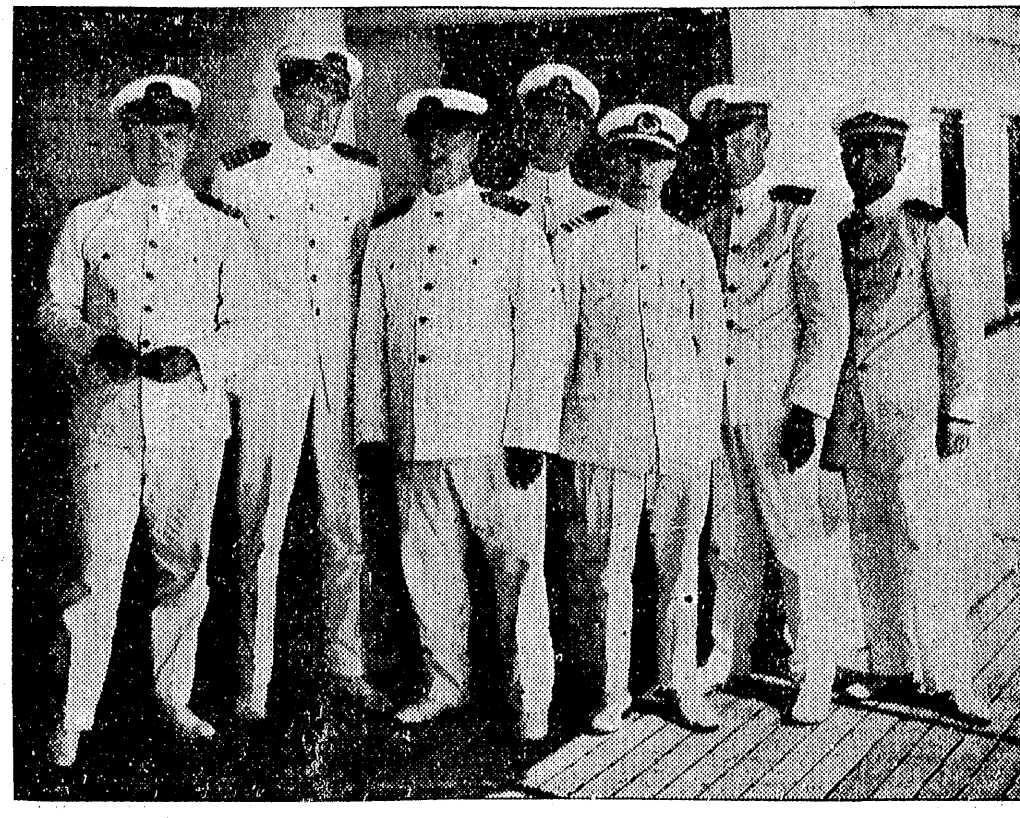
C. O. Carey, 745 N. W. Sixty-first street, left yesterday to visit his parents in Staunton, Va. Mr. Carey expects to be gone for several weeks.

R. H. Johnson, connected with the Carl G. Fisher Company, Miami Beach, left Thursday for Columbus, Ohio, for a short visit with friends after which he will go to Chicago.

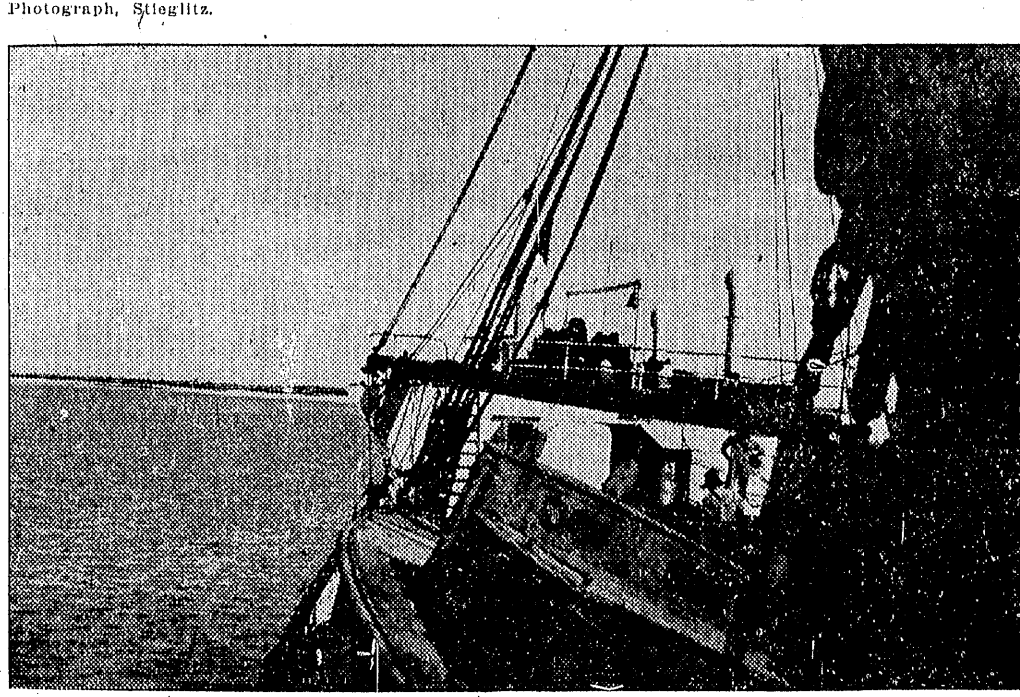
Joseph H. Tracey, city passenger agent for the Illinois Central System, left Thursday night for Birmingham, where he will spend a two weeks vacation.

Thomas E. Mathis, a vice president of the City National Bank and Trust Company, will leave today for San Antonio, Texas. He will remain there for a month, during his vacation.

Milton Gordon, former member of a Chicago law firm, has been admitted to the Florida bar and is now associated with the firm of Huder,



Officers of the Munson Steamship Line's SS. Munamar, the first large vessel to enter Nassau following the storm and the first passenger vessel similarly entering Miami, carrying refugees from the hurricane, would have been among heroes of the disaster had not passengers told the story of their brave fight and unceasing efforts to bring the ship and passengers through the disturbance as comfortably as possible. Left to right are William Grant, purser; J. J. Logan, chief engineer; Capt. C. M. McDonald, who was on the bridge continuously for 32 hours at one time while his ship was approaching Nassau; Dr. F. P. Hannon, ship's surgeon; I. H. Bennett, chief steward; A. W. Gavin, first officer, and A. Ognando, second steward.—Herald Photograph, Stiglitz.



The picture of the bow of the Munamar, approaching Nassau following the storm, shows a yacht which had been entrapped in the well deck as cargo. It tore from its lashings in the storm but was saved by the crew while tons of water cascaded over the bows onto the craft and the workers.—Photograph by J. Irmlinger.

Clements & Blackwell, Meyer-Klaeser Bank building. George Oliver, district passenger agent for the Florida East Coast Railway, and M. J. Pratt, city passenger agent of the L. & N. Railway, have gone to Los Angeles on a vacation. They will return to Miami in two weeks.

George R. Hilly, director of public relations for the Florida Power & Light Company, went to Sarasota Thursday on business. Mr. Hilly also will visit at Bradenton and Punta Gorda before his return to Miami Monday. Mrs. Hilly accompanied him.

Eugene Pulliam, editor of The Lebanon (Ind.) Reporter is visiting F. A. Thomas of the Meyer-Klaeser Bank, formerly an associate editor with him on The Franklin (Ind.) Star. Mr. Pulliam has been attending to business interests at Fort Lauderdale.

I. E. Schilling, head of the I. E. Schilling Company, and C. Ed de Brauwere left yesterday for a trip through North Carolina. Mr. Schilling will visit his son at Chimney Rock and Mr. de Brauwere will inspect various holdings which he has throughout North Carolina before returning to Miami in about two weeks.

Frank P. Allen, general manager of the job printing department of The Louisville Courier-Journal, is a guest at the Columbus Hotel with Gordon Holloway, Florida representative of the same paper. They are looking over the Miami territory and are especially interested in lithograph work.

L. Walker Quarterman, 5546 N. W. Seventh avenue, left yesterday on a business trip to Atlanta, Ga.

J. H. Swink, state's attorney, returned to his desk in the Dade county courthouse yesterday after a vacation in North Carolina.

W. J. Brown, 2143 N. W. Forty-third street, left Wednesday for an extended visit with relatives in Columbus, Ohio. He will return early in the fall.

C. O. Carey, 745 N. W. Sixty-first street, left yesterday to visit his parents in Staunton, Va. Mr. Carey expects to be gone for several weeks.

R. H. Johnson, connected with the Carl G. Fisher Company, Miami Beach, left Thursday for Columbus, Ohio, for a short visit with friends after which he will go to Chicago.

WOMAN'S LEAP FATAL

Passersby See Victim Hurtle From Tower of Everglades Apartments.

Continued from page 1. dress was of cut velvet material with lace trimmings for sleeves and a trimming of georgette on the bottom.

A plain hand wedding ring, which had fallen from her finger, was found near the body. The stones of another ring had been broken from the setting in the fall.

In her white beaded handbag was a small pocketbook containing \$1.05. A receipt check from the honorary department of a local department store for a purchase made on February 28 was found in the paper bag containing the electric wires.

Deputy Sheriff Daavers impounded a coroner's jury at the scene and set the inquest for 10 a. m. today. It will be conducted in the office of H. W. Penney, justice of the peace, 34 W. Flagler street.

The body was taken to the King Funeral Home. Attendants said they hoped to restore the features of the face to aid identification. The condition of the body, they said, indicated the woman had struck the pavement head first.

MEN! Solid Leather Shoes Specially Priced. Showing many different styles in all leathers at \$4.85 and \$5.85.

Harris SHOE STORE 245 N. Miami Ave.

W. L. PHILBRICK (ORIGINATOR) MIAMI'S FIRST FUNERAL HOME Private Packard Limousine Ambulance

Gautier Funeral Service Dignity, Courtesy and Reverence 514 W. Flagler Phones 8421-8422

Two Telephones: 23535-31624 King Undertaking Co. Established 1898

30 YEARS Private Ambulance Service W. H. COMBS CO. Established 1896

DANGER! Don't Scratch USE LO-ZEMA For prickly heat, eczema, tropical sores, itch and itch or eczema between toes.

The man who helped George E. Merrick's father move his effects from Fort Lauderdale to Miami way back in 1899 talks about the Miami of those days.

The story will be in Sunday's Herald.

SEE EMIL Fall from the Olympia Building Sunday, 1:45 P. M. ON THE SECOND

Fish Bait - Tackle - Table Shrimp ASK ANYONE Complete Line Fishing Tackle, Supplies, Fresh Shrimp, etc.

BROADWAY CAFE 111 West Flagler St. THE RENDEZVOUS OF FOOD EPICURES CLAMS ON THE SHELL Luncheon 60c-75c Dinner 75c-\$1.00 Special Chicken Dinner \$1.00

\$10,000 DAMAGE SUIT FILED FOR INJURIES Suffer for \$10,000 damages against C. D. Luff, city commissioner, and Miami agent of the Gulf Refining Company, was filed in Dade county Circuit court yesterday by H. S. Cross, bridge tender on the county causeway.